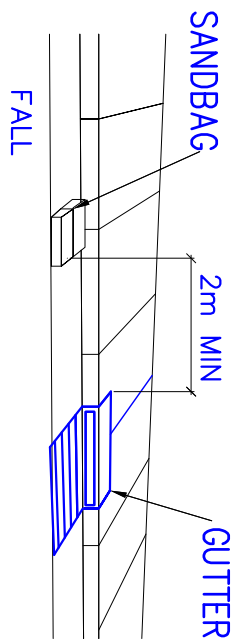
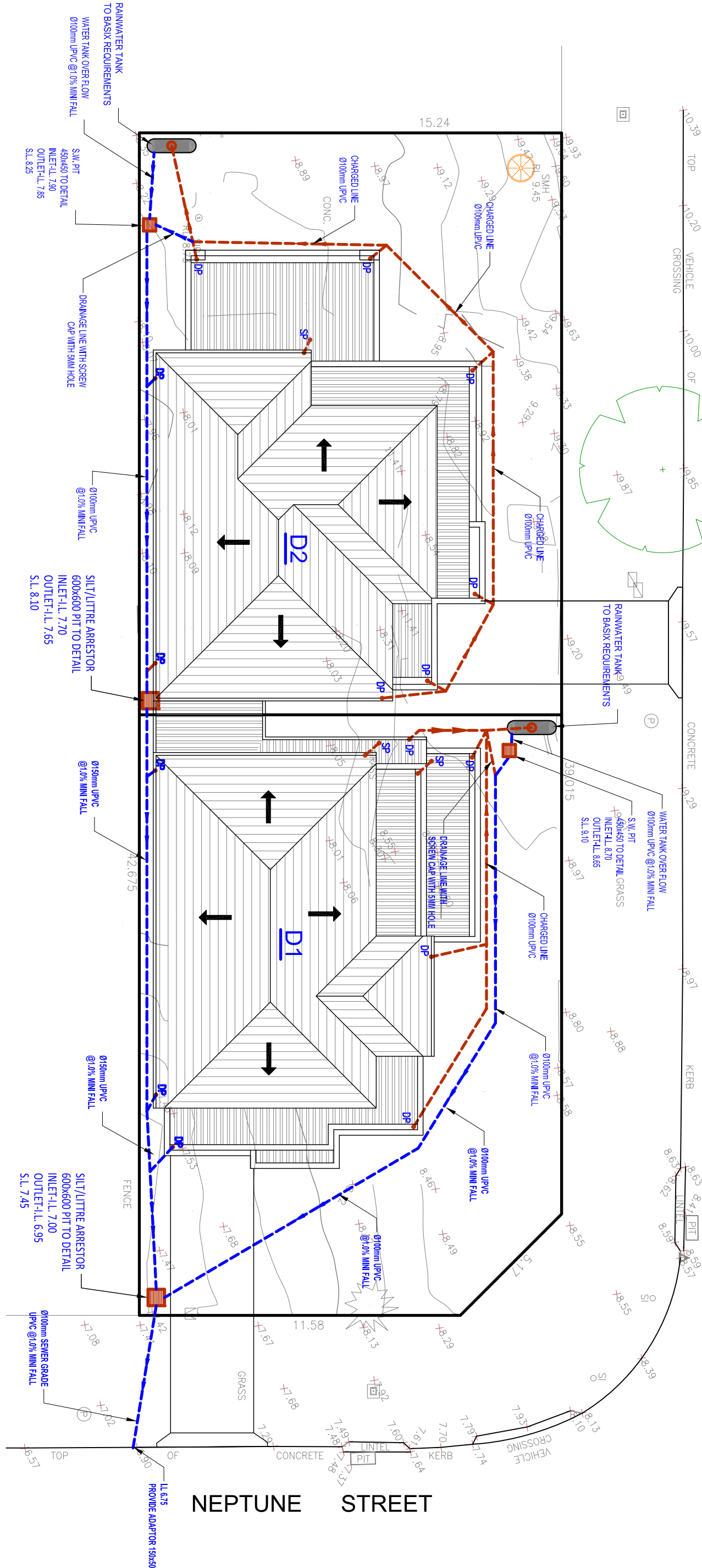
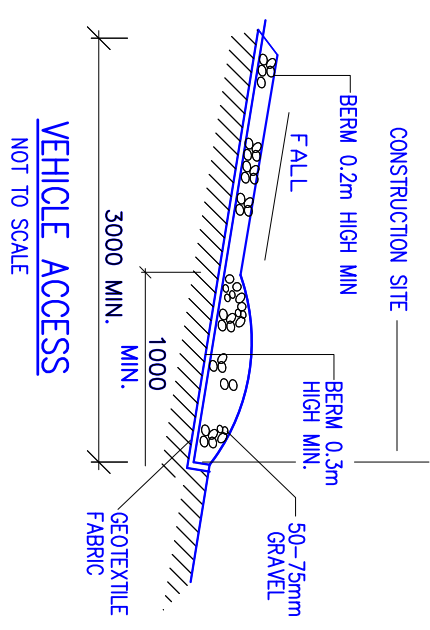


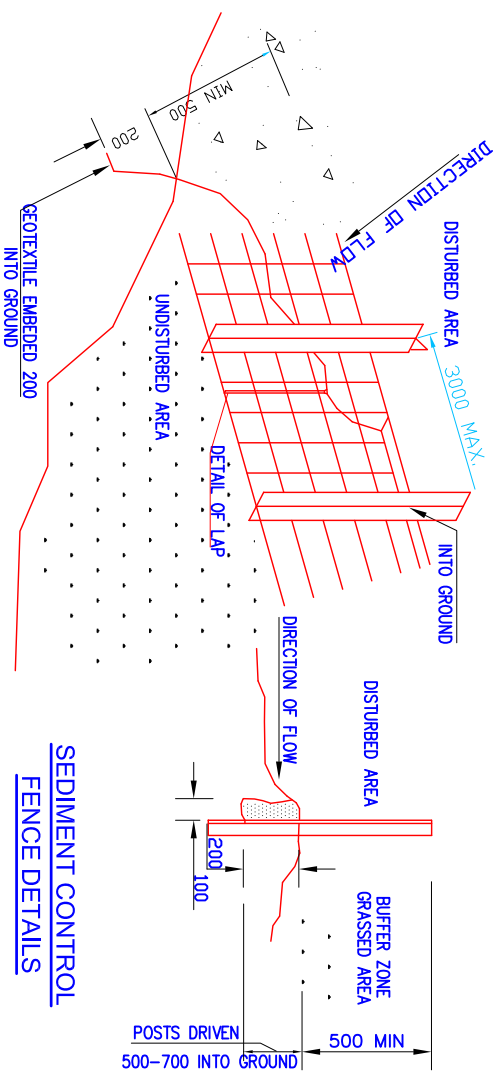
CENTAUR STREET



SANDBAG KERB SEDIMENT TRAP
NOT TO SCALE



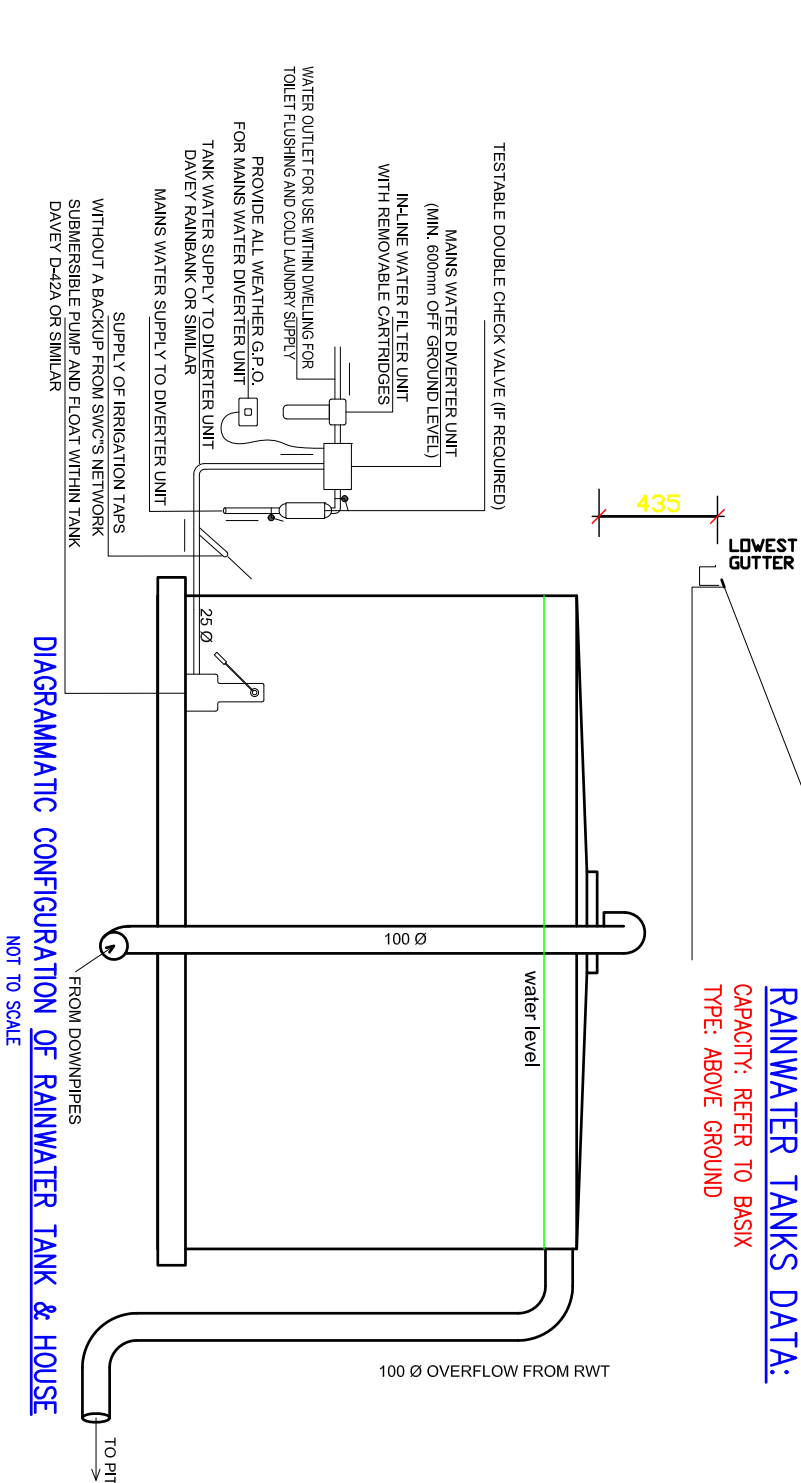
VEHICLE ACCESS
NOT TO SCALE



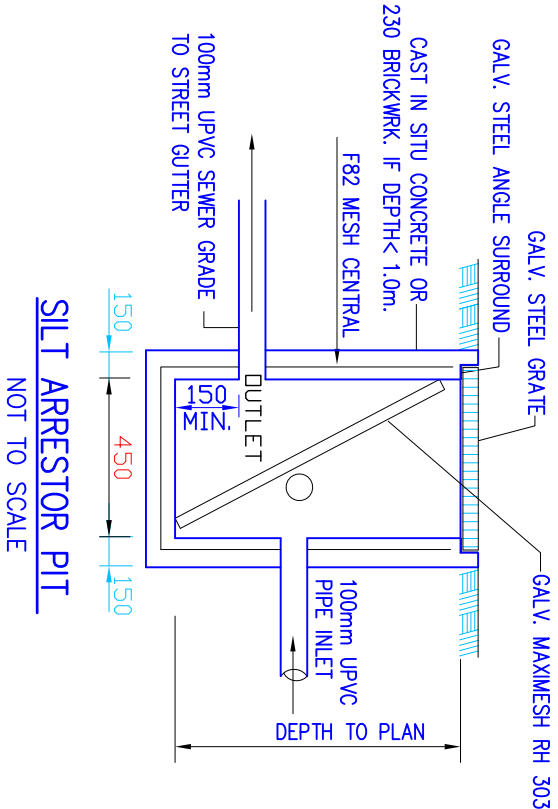
SEDIMENT CONTROL
FENCE DETAILS

STORMWATER DRAINAGE PLAN
SCALE 1:100

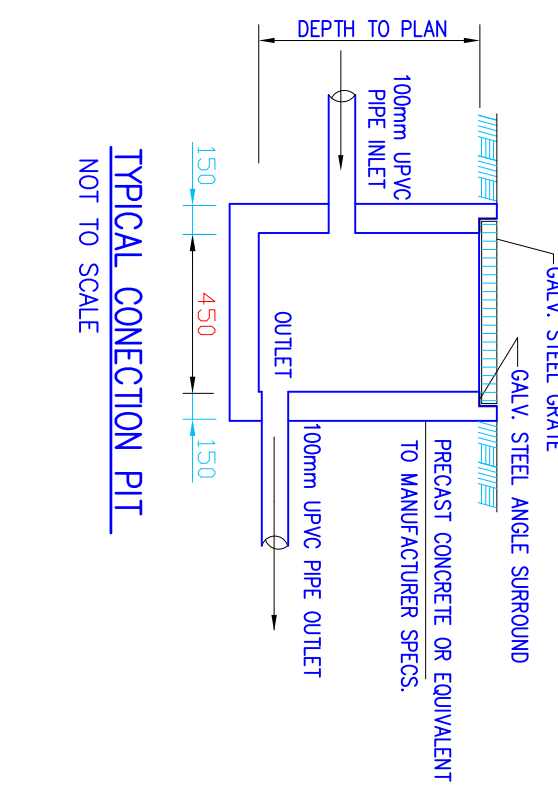
RAINWATER TANKS DATA:
CAPACITY: REFER TO BASIX
TYPE: ABOVE GROUND



DIAGRAMMATIC CONFIGURATION OF RAINWATER TANK & HOUSE
NOT TO SCALE



SILT ARRESTOR PIT
NOT TO SCALE



TYPICAL CONNECTION PIT
NOT TO SCALE

- NOTES:**
- RAIN WATER TANK CAPACITY AS PER BASIX REQUIREMENTS
 - THE SYSTEM TO BE DESIGNED WITH THE FOLLOWING GUIDELINES
 - A FIRST FLUSH DIVERSION TO REMOVE ROOF CONTAMINANTS
 - ADEQUATE SCREENING TO PREVENT MOSQUITO BREEDING AND ENTRY OF ANIMALS OF FOREIGN MATTER
 - TANKS TO BE PLUMBED TO TOP UP FROM THE PORTABLE WATER SUPPLY DURING DRY PERIODS WHEN THE TANKS ARE 80% EMPTY.
 - NO DIRECT GROSS CONNECTION WITH THE STOWEN WATER PORTABLE SUPPLY AND AIR GAS MAINTAINED ABOVE THE OVERFLOW IN THE TANK.
 - A SING TO BE INSTALLED STATING 'NOT FOR HUMAN CONSUMPTION'.
 - RAINWATER TANK TO BE CONNECTED AS PER BASIX REQUIREMENTS
 - OVERFLOW FROM THE TANK SHALL BE Piped TO THE DRAINAGE SYSTEM.
 - ALL EROSION AND SEDIMENT CONTROL MEASURES TO BE INSTALLED PRIOR TO SITE DISTURBANCE.
 - STRIPPING OF GRASS AND VEGETATION ETC FROM SITE SHALL BE KEPT TO A MINIMUM.
 - ALL SEDIMENT CONTROL STRUCTURES TO BE INSPECTED AFTER EACH RAINFALL EVENT FOR STRUCTURAL DAMAGE AND ALL TRAPPED SEDIMENT TO BE REMOVED TO A NOMINATED STOCKPILE SITE
 - THE BUILDER SHALL NOTIFY ALL SUBCONTRACTORS AND ENSURE COMPLIANCE WITH ALL CONDITIONS OF COUNCIL APPROVAL IN PARTICULAR EROSION AND SEDIMENT CONTROL

SYMBOLS & NOTATIONS

D.P. DOWN PIPE

STORMWATER LINES

INDICATES FALL DIRECTION (1% MINIMUM)

200 WIDE X 100 DEEP GRATED BOX DRAIN

BOUNDARY LINE

F.F.L. FINISHED FLOOR LEVEL

F.S.L. FINISHED SURFACE LEVEL

IL. INVERT LEVEL (PPEPIT)

SL. SURFACE LEVEL

S.C. F. SEDIMENT CONTROL FENCE

> > > OVER LAND FLOW PATH

TITLE:

STORMWATER-DRAINAGE PLAN

REV	DATE	DRAWN	CHECKD	DESCRIPTION
A	26/02/22	J.RAFLA	G.BOTROS	CDC APPLICATION

CLIENT: MR.

PROJECT: DUAL OCCUPANCY

7 NEPTUNE STREET

REYESBY NSW

DATE:	SCALE:
29/01/2025	AS SHOWN
DESIGN BY: GHALY BOTROS	CHECKED BY: GHALY BOTROS
DRAWN BY: J.RAFLA	APPROVED:
SHEET NO. 1	DWG NO. 291 /22
	REV. A

